

FILTERS WITH BAYONET CONNECTION

DOTeco filters are used with MAG-2 or UNIX 5100 Full Face Masks, UNIX or UNIX1100 Half Masks. Filters comply with EN 14387 and EN 143.

UNIX

DOTeco particle filter



Filter Retainer



UNIX filter



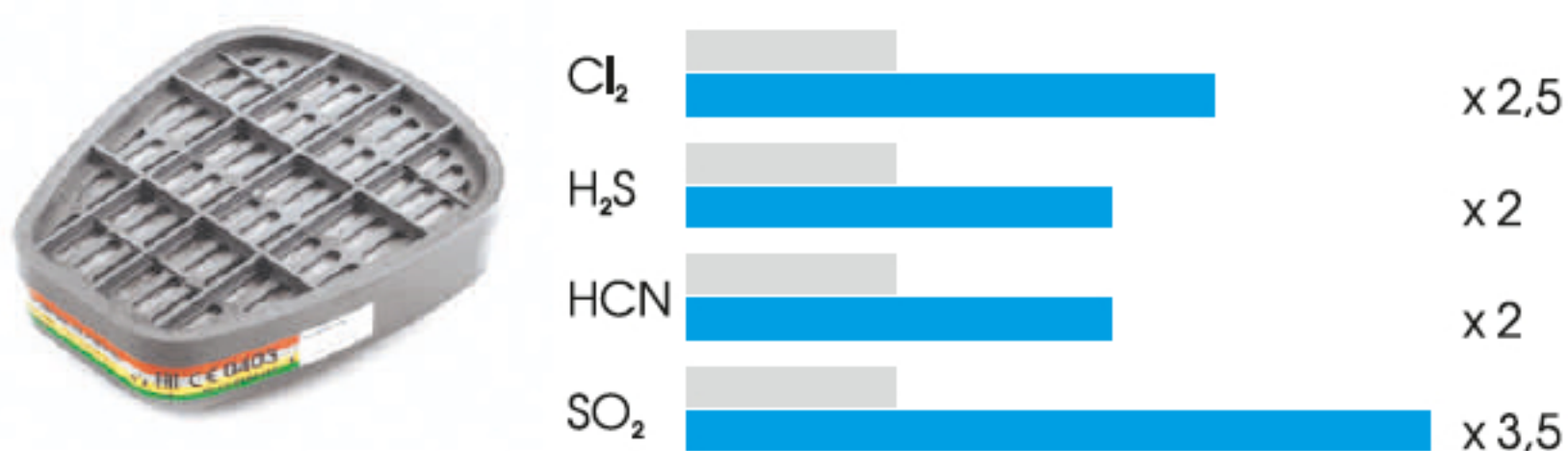
DOTeco Gas filter



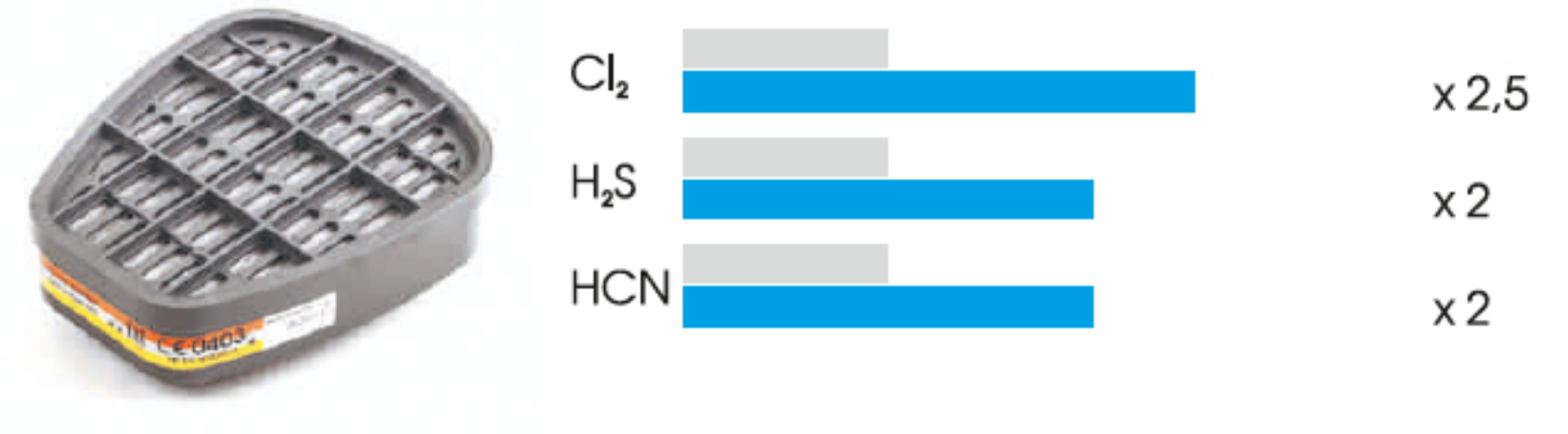
Name	Classification
DOTeco 120	A2
DOTeco 120	K2
DOTeco 120 +	A1B1E1
DOTeco 120	A1B1E1K1
DOTeco 150	A2B2E2

Name	Classification
DOTeco	P3 R D <input type="checkbox"/>
UNIX	P1 <input type="checkbox"/>
UNIX	P2 <input type="checkbox"/>
UNIX	P3 <input type="checkbox"/>

DOTeco 120+ A1B1E1 extra features*



DOTeco 120 A1B1E1K1 extra features*

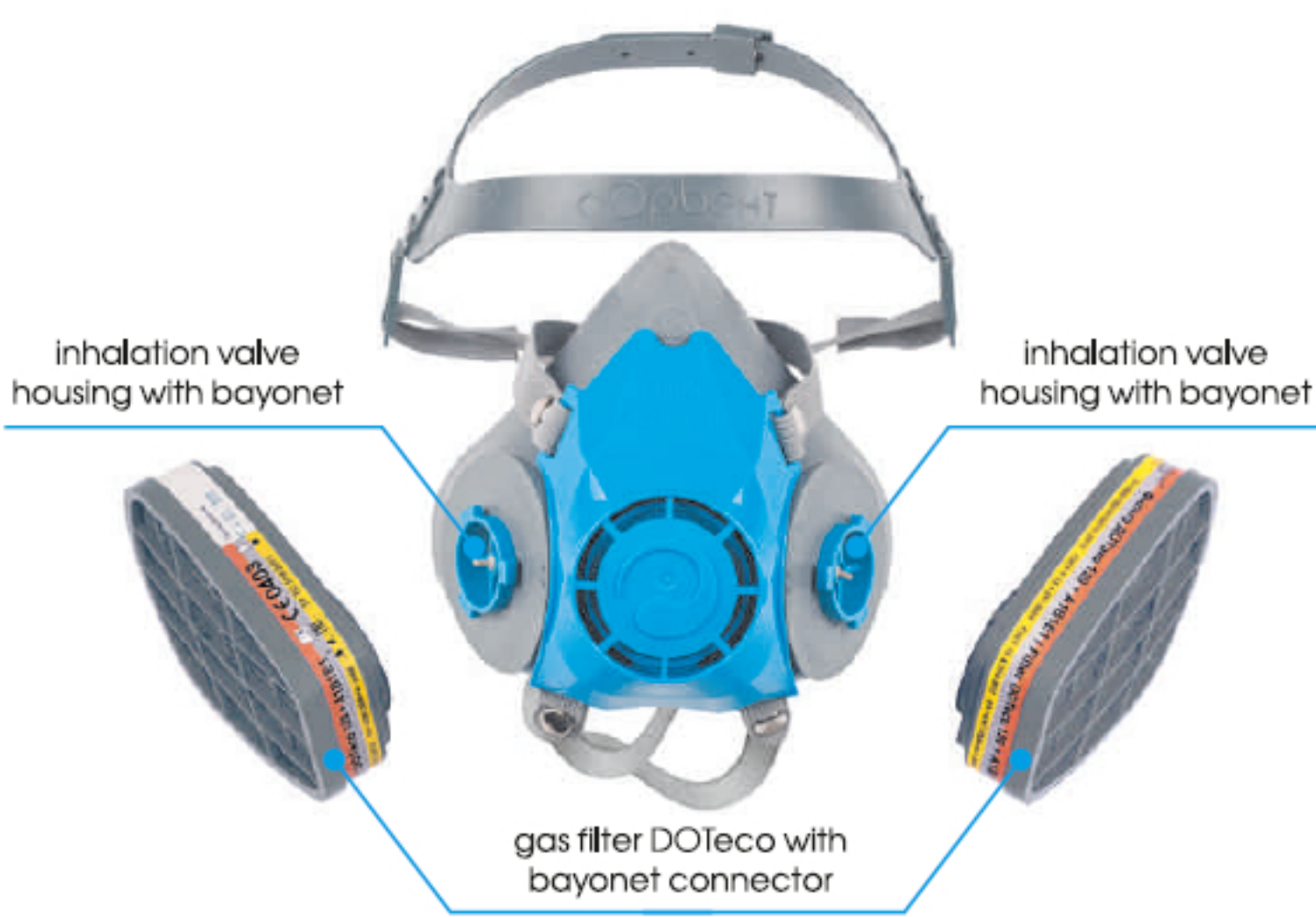


* – approved extra protection in accordance with EN 14387

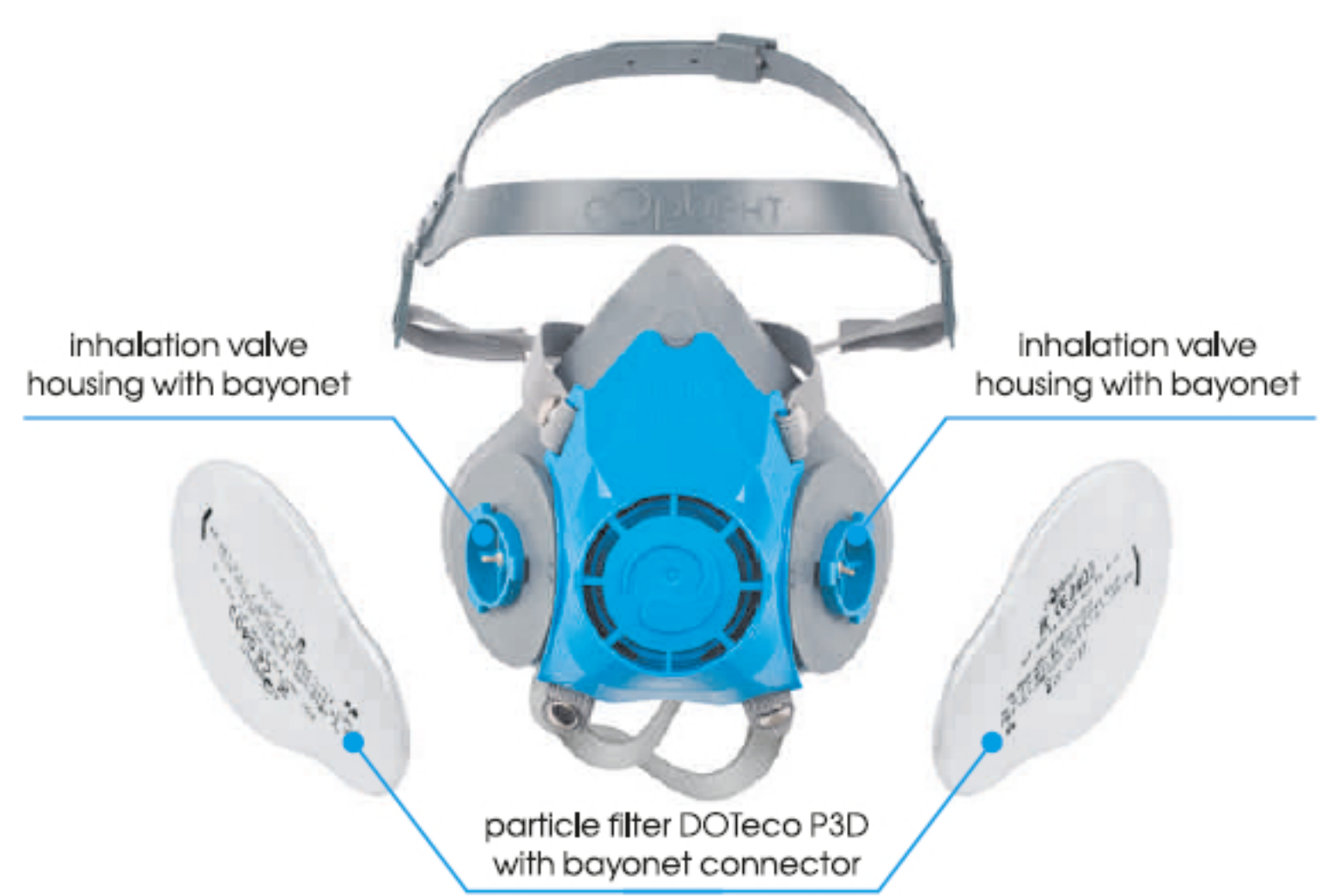
– EN 14387 requirements – extra protection provided by filter

FIXATION OF FILTERS TO UNIX HALF MASK

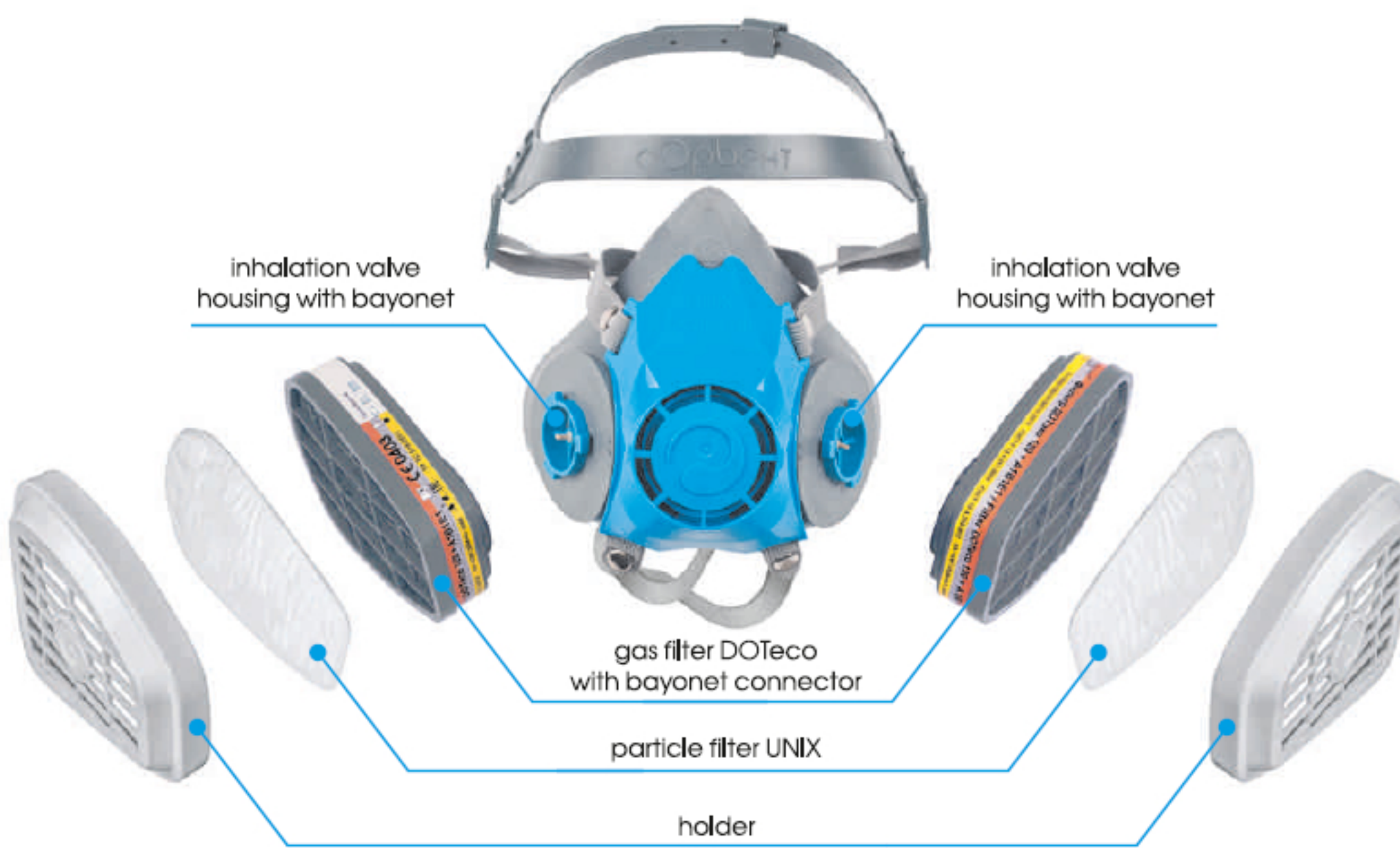
Gas protection



Particle protection

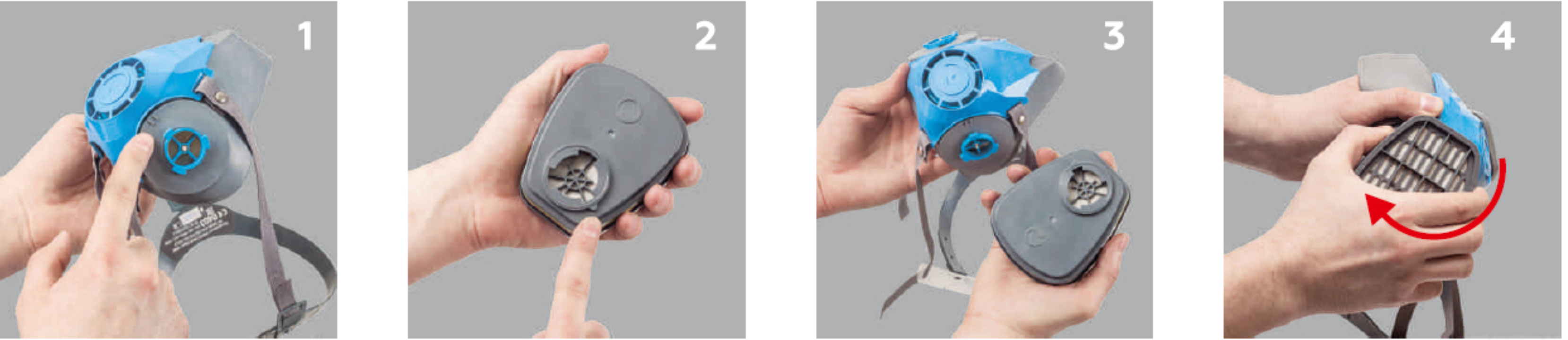


Combined protection



PREPARATION OF RESPIRATOR

Gas protection



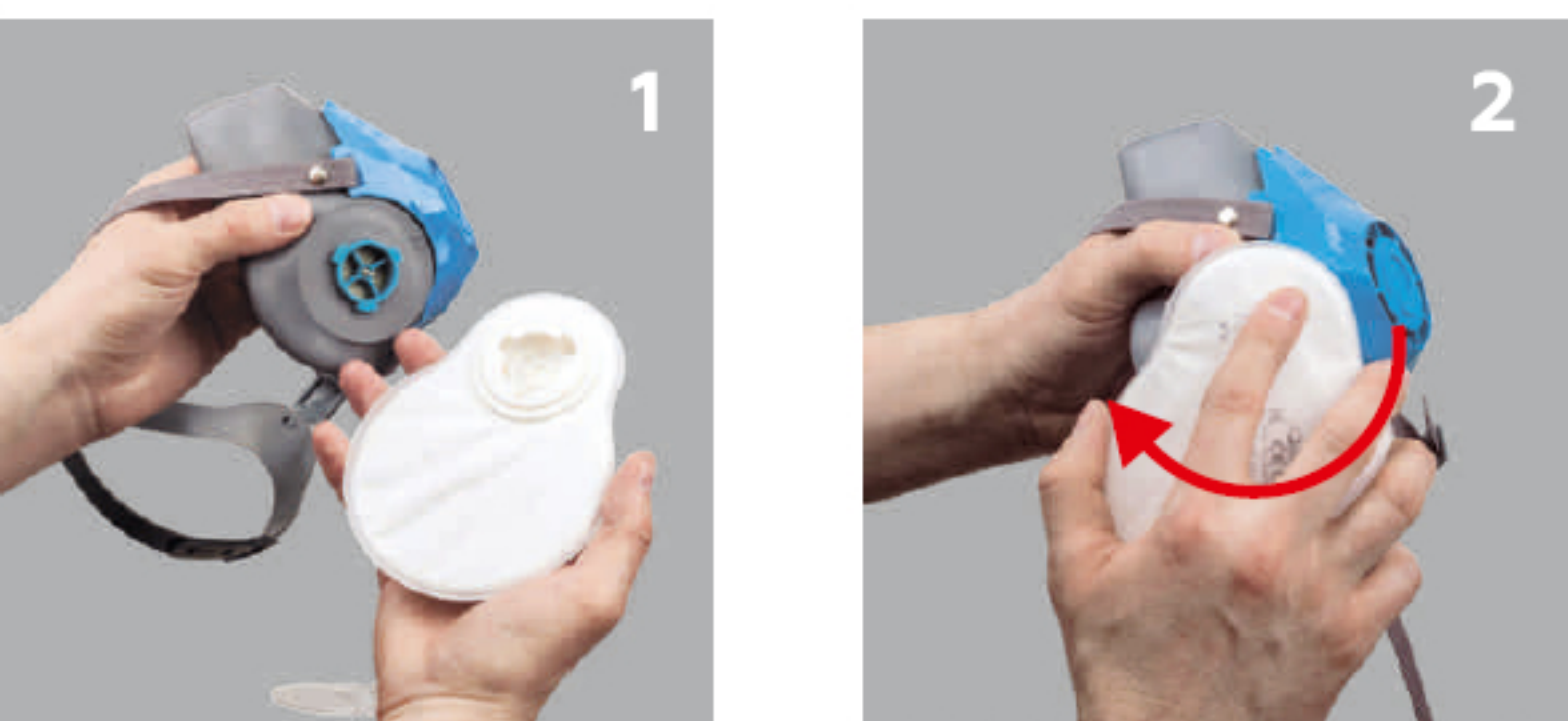
1. Position of matchmarks on the half mask; 2. Position of a key snug on the gas filter; 3. Align three filter's gutters and three teeth on the half mask so that a ledge is located between two scribe marks; 4. Turn the filter canister clockwise until bumping.

Combined protection



1–2. Put a changeable particle filter with its marking down into a holder; 3. Connect the holder to a gas filter until it clicks; 4. Connect the combined filter to a half mask as shown at pictures 3–4.

Particle protection



1. Align three filter's gutters and three teeth on the half mask; 2. Turn the filter canister clockwise until bumping.