



## SPP Lab Coat/ Visitor Coat/ Blouse

**Reference** XYBL012

**Materials** polypropylene SPP 40g/m<sup>2</sup>  
available weight 20g/m<sup>2</sup>-70g/m<sup>2</sup> etc

**Style** single classic collar,  
elastic cuffs,  
4 snaps fasteners at front  
no pockets

**Color** white, blue, red, green etc

**Packing** 1pc/polybag,50pcs/ctn

**Size** S, M, L, XL, XXL

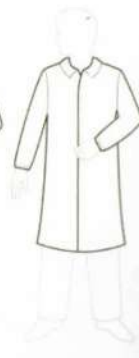
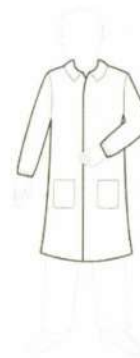
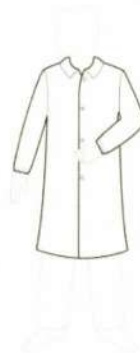
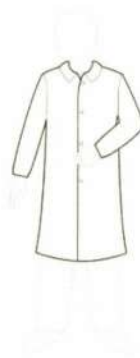
**Standard** CE category I, FDA, ISO9001, Minimum risk

**Key Features** soft, light, breathable, economical, dirt resistance  
Customized specification available

**Applications** Hygiene, cleaning, food industry, factory, hospital, etc

### Variations of Styles

Collar type	Cuff type	Pockets type	Closure type
Single collar	Open cuff	No pockets	Plastic snaps
Double collar	Elastic cuff	1 pocket	Metal snaps
Mao collar	Knitted cuff	2 pockets	Velcro fasteners
Knitted collar		3 pockets	Zip
		4 pockets	



single collar  
open cuffs  
4 snaps  
or 4 velcro  
XYBL011  
XYBL011V

single collar  
elastic cuffs  
4 snaps  
or 4 velcro  
XYBL012  
XYBL012V

single collar  
elastic cuffs  
zip front  
2 pockets  
XYBL013

single collar  
elastic cuffs  
zip front  
XYBL014

knitted collar  
knitted cuffs  
4 snaps  
3 pockets  
XYBL015